

NORDFRAME LATTICE FLOOR JOISTS

High Tech Lightweight Steel beams with open webs and wide plate flanges

FAST TO BUILD BUT BUILT TO LAST

Product Features:

Floor Finishes:- Timber, Liquid or concrete screed

Timber Frame:- Compatible with Timber frame including use of concrete screed

Spans:- Up to 10.5mts for timber and 8.0mts for concrete

Lengths:- Made to measure or stock lengths suitable for trimming on site.

Depth:- Depths equal to timber joists or bespoke sizes to suit project

Services:- Routed between joists and through joist webs

Fixing ceiling and floors:- Nordframes wide flanges (89mm) provide large fixing points for ceiling or floor materials.

Under floor heating:- Ideal for under floor screed systems

Savings:- 50% labour saving when compared to timber joists – no lifting equipment required

Eco Friendly:- Steel is totally recyclable

Nordframe systems also include complete building form private homes, school and commercial applicants.

Additional Nordframe Components

Infill Panels

Skeletal Pods and Units

Load Bearing Floors

Building Modules

Lattice Joists & Beams

Light Steel joists

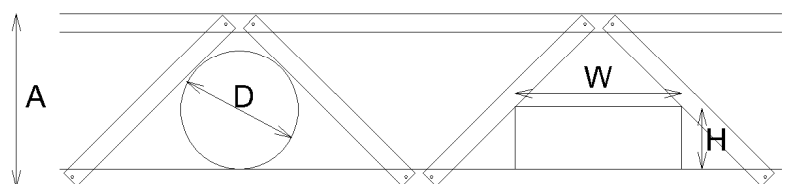
Modular Roofing

Low Pitch Roof Trusses

Standard Trusses

Flat to pitch roof conversions

Nordspan Service Clearance



Clearance for circular services

	NS219	NS254	NS304	NS418
A (mm)	219	254	304	418
D (mm)	94	112	150	212

Clearance for rectangular services

	NS219	NS254	NS304	NS418
H (mm)	W(mm)	W(mm)	W(mm)	W(mm)
50	215	274	433	628
100	114	177	319	525
150	N/A	81	205	422
200	N/A	N/A	91	318
250	N/A	N/A	N/A	217
300	N/A	N/A	N/A	114

Nordspan Table for 1.0mm Lattice Beams

Truss centres	Floor Finish	Imposed Load Description	Total SLS Load	Section Type	Truss Depth	Max Joist Span	Truss Depth	Max Joist Span	Truss Depth	Max Joist Span	Truss Depth	Max Joist Span
400mm	Lewis + 50mm screed	Domestic	2.40	88.9x41.3x1.0	219	6.27	254	6.76	304	7.39	418	8.67
	Lewis + 75mm screed		2.90			5.75		6.19		6.77		7.94
	Ply + 75mm screed		3.05			5.61		6.04		6.61		7.75
	Ply + 50mm screed		2.55			6.10		6.57		7.18		8.42
	22mm Timber		1.65			7.42		7.99		8.74		10.25
600mm	Lewis + 50mm screed	Domestic	2.40	88.9x41.3x1.0	219	5.12	254	5.52	304	6.04	418	7.08
	Lewis + 75mm screed		2.90			4.69		5.05		5.53		6.48
	Ply + 75mm screed		3.05			4.58		4.93		5.40		6.33
	Ply + 50mm screed		2.55			4.98		5.36		5.87		6.88
	22mm Timber		1.65			6.06		6.53		7.14		8.37
400mm	Lewis + 50mm screed	Domestic Plus Partition	3.40	88.9x41.3x1.0	219	5.23	254	5.64	304	6.17	418	7.23
	Lewis + 75mm screed		3.90			4.92		5.29		5.79		6.79
	Ply + 75mm screed		4.05			4.83		5.20		5.69		6.67
	Ply + 50mm screed		3.55			5.13		5.52		6.04		7.09
	22mm Timber		2.65			5.85		6.30		6.89		8.08
600mm	Lewis + 50mm screed	Domestic Plus Partition	3.40	88.9x41.3x1.0	219	4.27	254	4.60	304	5.03	418	5.90
	Lewis + 75mm screed		3.90			4.01		4.32		4.73		5.55
	Ply + 75mm screed		4.05			3.94		4.25		4.65		5.45
	Ply + 50mm screed		3.55			4.19		4.51		4.93		5.79
	22mm Timber		2.65			4.77		5.14		5.62		6.59
400mm	Lewis + 50mm screed	General Office	4.10	88.9x41.3x1.0	219	4.75	254	5.12	304	5.60	418	6.56
	Lewis + 75mm screed		4.60			4.51		4.86		5.31		6.23
	Ply + 75mm screed		4.75			4.44		4.79		5.24		6.14
	Ply + 50mm screed		4.25			4.67		5.03		5.51		6.46
	22mm Timber		3.35			5.20		5.60		6.12		7.18
600mm	Lewis + 50mm screed	General Office	4.10	88.9x41.3x1.0	219	3.88	254	4.18	304	4.57	418	5.36
	Lewis + 75mm screed		4.60			3.68		3.97		4.34		5.09
	Ply + 75mm screed		4.75			3.63		3.91		4.27		5.01
	Ply + 50mm screed		4.25			3.82		4.11		4.50		5.27
	22mm Timber		3.35			4.24		4.57		5.00		5.86

Nordspan Table for 1.2mm Lattice Beams

Truss centres	Floor Finish	Imposed Load Description	Total SLS Load	Section Type	Truss Depth	Max Joist Span	Truss Depth	Max Joist Span	Truss Depth	Max Joist Span	Truss Depth	Max Joist Span
400mm	Lewis + 50mm screed	Domestic	2.40	88.9x41.3x1.2	219	7.51	254	8.09	304	8.85	418	10.38
	Lewis + 75mm screed		2.90			6.88		7.41		8.11		9.51
	Ply + 75mm screed		3.05			6.72		7.23		7.91		9.28
	Ply + 50mm screed		2.55			7.30		7.86		8.60		10.08
	22mm Timber		1.65			8.88		9.57		10.47		10.78
600mm	Lewis + 50mm screed	Domestic	2.40	88.9x41.3x1.2	219	6.13	254	6.60	304	7.22	418	8.47
	Lewis + 75mm screed		2.90			5.62		6.05		6.62		7.76
	Ply + 75mm screed		3.05			5.48		5.91		6.46		7.58
	Ply + 50mm screed		2.55			5.96		6.42		7.02		8.23
	22mm Timber		1.65			7.25		7.81		8.55		10.02
400mm	Lewis + 50mm screed	Domestic Plus Partition	3.40	88.9x41.3x1.2	219	6.26	254	6.75	304	7.38	418	8.66
	Lewis + 75mm screed		3.90			5.89		6.34		6.93		8.13
	Ply + 75mm screed		4.05			5.78		6.23		6.81		7.99
	Ply + 50mm screed		3.55			6.14		6.61		7.23		8.48
	22mm Timber		2.65			7.00		7.54		8.24		9.67
600mm	Lewis + 50mm screed	Domestic Plus Partition	3.40	88.9x41.3x1.2	219	5.12	254	5.51	304	6.03	418	7.07
	Lewis + 75mm screed		3.90			4.81		5.18		5.66		6.64
	Ply + 75mm screed		4.05			4.72		5.08		5.56		6.52
	Ply + 50mm screed		3.55			5.01		5.40		5.91		6.93
	22mm Timber		2.65			5.71		6.15		6.73		7.89
400mm	Lewis + 50mm screed	General Office	4.10	88.9x41.3x1.2	219	5.69	254	6.13	304	6.70	418	7.86
	Lewis + 75mm screed		4.60			5.40		5.82		6.36		7.46
	Ply + 75mm screed		4.75			5.32		5.73		6.27		7.35
	Ply + 50mm screed		4.25			5.59		6.03		6.59		7.73
	22mm Timber		3.35			6.22		6.70		7.33		8.59
600mm	Lewis + 50mm screed	General Office	4.10	88.9x41.3x1.2	219	4.64	254	5.00	304	5.47	418	6.42
	Lewis + 75mm screed		4.60			4.41		4.75		5.19		6.09
	Ply + 75mm screed		4.75			4.34		4.68		5.12		6.00
	Ply + 50mm screed		4.25			4.57		4.92		5.38		6.31
	22mm Timber		3.35			5.08		5.47		5.98		7.02

Call us



To find out more about any of our products call Nordman on 065 9052011 or check our website at www.nordman.ie